



South African
NATIONAL PARKS

A POCKET GUIDE TO CAMPS IN THE
KRUGER NATIONAL PARK



Why Rush? Stay Longer, See More!

YOUR NATURAL HERITAGE



MAIN RESTCAMPS

All the major restcamps have electricity, first-aid centres, a shop, braai and communal kitchen facilities, a laundromat, a restaurant and /or self-service cafeteria, public telephones and a filling station. All are manned by fully trained information staff. Holiday programmes and evening film shows of wildlife and conservation are arranged in many of the restcamps. Please enquire at reception.



BUSHVELD CAMPS

Bushveld camps provide accommodation in smaller, more remote camps. One or more accommodation units may be reserved. Bushveld camps do not have shops or restaurants. Access to all bushveld camps is restricted to overnight visitors with reserved accommodation. Open verandas often serve as kitchen /dining room. All units have a refrigerator, cooking utensils, crockery, cutlery and a stove, either a two-plate stove without an oven or a four-plate stove with an oven in the larger units. All units have private ablution facilities.



MAIN RESTCAMPS

Berg-en-Dal:	+27	(0)13	735	6106/7
Crocodile Bridge:	+27	(0)13	735	6012
Letaba:	+27	(0)13	735	6636
Lower Sabie:	+27	(0)13	735	6056/7
Mopani:	+27	(0)13	735	6535/6
Olifants:	+27	(0)13	735	6606
Orpen:	+27	(0)13	735	6355
Pretoriuskop:	+27	(0)13	735	5128/32
Punda Maria:	+27	(0)13	735	6873
Satara:	+27	(0)13	735	6306/7
Shingwedzi:	+27	(0)13	735	6806/7
Skukuza:	+27	(0)13	735	4152



BUSHVELD CAMPS

Bateleur:	+27	(0)13	735	6843
Biyamiti:	+27	(0)13	735	6171
Shimuvini:	+27	(0)13	735	6683
Sirheni:	+27	(0)13	735	6860
Talamati:	+27	(0)13	735	6343



BATELEUR

This delightful camp is situated on the banks of the Mashokwe Spruit approximately 40 km south west of Shingwedzi in the beautiful northern Mopane/ Woodland savannah of the Kruger National Park. Bateleur, being the oldest and the smallest of the bushveld camps, offers a unique atmosphere and superb game viewing. One of the many features Bateleur offers is a game-viewing hide that overlooks a waterhole just outside the camp. Two dams, Silwervis and Rooibosrand, are within close range of the camp and are restricted to the residents of Bateleur.

ACCOMMODATION



Guest
Cottage



GUEST COTTAGES: 7 fully equipped cottages, which are serviced every day. Many of the bedrooms have en-suite bathrooms and each bedroom is either air-conditioned or has a ceiling fan. All accommodation units are serviced daily and supplied with bedding, towels and soap. Each unit has its own barbecue facilities and wood can be bought from the mini shop. Each unit also has its own electricity points and TVs that broadcast SABC 1,2,3 and E-TV.



ACTIVITIES



Night Drive



Morning Drive



Guided Bush Walk



THINGS TO SEEK

1. Bateleur Eagle
2. Leopard
3. Hippo
4. Impala
5. Blue Wildebeest





BERG-EN-DAL

Berg-en-Dal is situated on the bank of the Matjulu Spruit with a view of softly undulating hills to the east. On the northern and southern sides dry riverbeds and a dam border the camp. There are large trees along the streams and dry riverbeds. Special care has been taken to preserve the natural vegetation on the site.

ACCOMMODATION



Camping Sites



Caravan Sites



Bungalows



Family Cottage



Guest House



CAMPSITES: Tent or caravan sites with power point; communal ablutions and cooking facilities; maximum of 6 persons per site.

BUNGALOWS: There are 3 bedded rooms equipped with hotplate, air conditioning, sinks, kitchenette with utensils, toilet, shower, basin, perimeter and non perimeter units.

There is 1 paraplegic unit.

FAMILY COTTAGES: 6 bed units, separate toilet shower and bath, basin, kitchen, dining room/ lounge, perimeter and non perimeter. 2 x paraplegic family cottages, with 1 shower and some with 1 bath.

J LE ROUX AND RHINO GUEST HOUSES: J Le Roux sleeps 6 and Rhino sleeps 8.



ACTIVITIES



Night Drive



Morning Drive



Bush Breakfast/
Braai



Wilderness Bush Walk



Guided Bush Walk



Kids Education Programs



Wildlife Videos



Swimming Pool



Museum



Bush Art Site



THINGS TO SEEK

1. White Rhino
2. Klipspringer
3. Leopard
4. Scarlet-chested Sunbird
5. Heuglin's Robin





BIYAMITI

On the banks of the Mbiyamiti river, hidden by delagoa thickets, nestles one of the most beautiful bush camps in the Kruger National Park. Biyamiti camp is ideally situated between huge wild fig and jackalberry trees with vast numbers of other fauna and flora species in abundance. The area is a game spotter's dream come true.

ACCOMMODATION



Cottage



Guest
Cottage



GUEST COTTAGES: Ten 2-Bedroom units. Both bedrooms have ceiling fans; one has 3 single beds, and the other 2 single beds. One bedroom has a bathroom en-suite, there is a separate toilet, shower and wash basin. The kitchen has a gas stove (with oven), fridge/ freezer combination, sink, cooking utensils, crockery and cutlery. The dining room has a veranda.

COTTAGES: Five 1-Bedroom units. The bedroom contains two single beds and has a ceiling fan. There are two bench-beds in the living room with a ceiling fan. The bathroom has a bath, shower, toilet and wash basin and interleading doors to the bedroom and living room. Meals can be taken on the open veranda.



ACTIVITIES



Night Drive



Morning Drive



Photographic Drive



Guided Bush Walk



THINGS TO SEEK

1. White Rhino
2. Duiker
3. Lion
4. Buffalo
5. Giraffe





CROCODILE BRIDGE

This small and delightful camp is situated in the Southeastern corner of Kruger, on the northern bank of the Crocodile River, from which it derives its name. The game viewing area is known as the 'Southern Circle' and is renowned for its concentration of different prides of lion with different hunting techniques and behaviour. It is home to a larger percentage of the Kruger National Park's total rhino population.

ACCOMMODATION



Camping
Sites



Caravan
Sites



Bungalows



Safari
Tents



CAMPING SITES: The campsite consists of twenty electrified stands with movable braai grids. A sparkling camp kitchen with 24-hour boiling water, electric hotplates and washing up facilities forms part of the amenities provided (with wheelchair access).

BUNGALOWS: There are twenty two 2 or 3-bed bungalows in the camp.

SAFARI TENTS: There are also eight 2-bed safari tents in the camp.



ACTIVITIES



Night Drive



Morning
Drive



Day Drive



Guided
Bush Walk



4x4 Adventure
Trails



THINGS TO SEEK

1. White Rhino
2. Lions
3. Cheetah
4. Serval
5. Porcupine





LETABA

The idyllic Letaba main rest camp is situated on a sweeping bend of the Letaba River. The name means “river of sand” and the sandy riverbed is an excellent location for game viewing, particularly elephants, which thrive in the area. Letaba is a green oasis in the surrounding mopane veld, and remains a firm favourite with visitors. At night the owls, frogs, fruit bats, crickets and cicadas create a symphony of sound that compliments the breathtaking expanse of stars.

ACCOMMODATION



Camping Sites



Caravan Sites



Huts



Bungalows



Guest Cottages



Safari Tents

CAMPSITES: Tent or caravan sites, with power point, communal ablutions and cooking facilities, maximum of 6 persons per site.

HUTS: 3 bed round rooms with communal ablution and kitchen.

BUNGALOWS: 2 or 3 bedded rooms. Equipped with ablutions, air-conditioning, some have both hotplates and sinks.

GUEST COTTAGES: 6 bed units, 2 bathrooms, kitchen and dining room/ lounge, riverside view.

SAFARI TENTS: 2 or 4 bed permanent canvas tents, communal ablutions and cooking facilities, fridge.

MELVILLE AND FISH EAGLE GUEST HOUSES: Melville sleeps 8 and has an exclusive riverside view. Fish Eagle sleeps 9 and has a bird hide.



ACTIVITIES



Night Drive



Morning Drive



Day Drive



4x4 Adventure Trails



Swimming Pool



Guided Bush Walk



Bush Breakfast/
Braai



Kids Education Programs



Museum



THINGS TO SEEK

1. Bushbuck
2. Elephant
3. Lala Palm
4. Red Headed Weaver
5. Fish Eagle





LOWER SABIE

Lower Sabie graces the banks of the Sabie River. Visitors cannot help but feel soothed by the view towards the river and the Lebombo mountains beyond, across expansive green lawns, shaded from the relentless African sun by majestic Sycamore Fig, Marula and Natal Mahogany trees. In this rest camp, the bounty and plenitude of nature are very evident, eloquently symbolised by the most conspicuous of its numerous trees, which provides generously for the livelihood of many birds and insects.

ACCOMMODATION



Family Cottage



Guest Cottage



Safari Tents



Guest House



Camping Sites



Caravan Sites



Huts



Bungalows

CAMPSITES: Tent or caravan sites, with power point, communal ablutions and cooking facilities, maximum of 6 persons per site.

HUTS: 3 bed round rooms with communal ablutions and kitchen.

BUNGALOWS: 2 or 3 bed round rooms. Equipped with ablutions, air-conditioning, some have both hotplates and sinks.

GUEST COTTAGES: Steenbok and Moffet - 4 bed units, 2 bathrooms, kitchen and dining room/ lounge, riverside view.

SAFARI TENTS: 2-bed units fully equipped.

KEARTLAND GUEST HOUSE: 7-bed unit.



ACTIVITIES



Night Drive



Morning Drive



Guided Bush Walk



Swimming Pool



THINGS TO SEEK

1. White Rhino
2. Hippopotamus
3. Lion
4. Goliath Heron
5. Giant Kingfisher





MOPANI

On the banks of the Pioneer Dam in the world renowned Kruger National Park, lies its best kept secret: a unique tranquil and stylish restcamp nestled amongst the koppies with Mopani trees and a huge gnarled old baobab tree in the heart of the camp.

ACCOMMODATION



Bungalows



Cottage



Guest
Cottage



Guest
House



BUNGALOWS: 4 beds (one twin-bedded room; bunk bed in alcove for two children; one bathroom); veranda with kitchenette; outside braai (barbecue) facilities.

COTTAGES: 4 beds (one twin-bedded en-suite bedroom; two sleeper couches in lounge with en-suite bathroom); veranda with kitchenette; outside braai (barbecue) facilities.

GUEST COTTAGES: 6 beds (three twin-bedded bedrooms; one bedroom en suite); additional bathroom; kitchen-lounge-dining room; veranda with braai (barbecue) facilities.

XANATSENI GUEST HOUSE: 8 beds (four twin-bedded rooms all en-suite; one bedroom is wheelchair friendly); lounge-dining room and kitchen separate; veranda with view of dam; outside braai (barbecue) facilities.

SHIPANDANE-SLEEP-OVER-HIDE: 6 beds; Rustic bird hide which converts into sleeping unit at night.

TSENDZE RUSTIC CAMP SITE: 34 camp sites without electricity.



ACTIVITIES



Night Drive



Morning Drive



Guided Bush Walk



Bush Breakfast/
Braai



Swimming Pool



Wildlife Videos



THINGS TO SEEK

1. Hippopotamus
2. Waterbuck
3. Tsessebe
4. African Fish Eagle
5. Mopani Trees





OLIFANTS

Guests that visit Olifants will be exposed to an unforgettable window on Africa. The camp is situated atop a hill which towers several hundred feet over the Olifants river. Views from the lookout platforms allow one to see the river below, just as a soaring eagle would survey it, hunting from the skies.

ACCOMMODATION



Bungalows



Guest
Cottage



Guest
House



BUNGALOWS: 2, 3 or 4-bedded rooms; equipped with ablutions (most with showers, but some with baths); air-conditioning; some have kitchenettes while others have communal ablutions; some are located on the perimeter edge with a wonderful vista of the river below.

GUEST COTTAGES: 4-bed, 2-bed rooms.

GUEST HOUSES: Nshawu and Lebombo – 8-bed exclusive view and location; fully equipped four 2-bed bedrooms (ask if you would like a double bed); en-suite bathrooms; kitchen; lounge-dining room; several lookout decks and television.



ACTIVITIES



Night Drive



Morning Drive



Guided Bush Walk



Mountain Bike Trail



Astronomy Drive



Backpackers Trail



Bush Breakfast/
Braai



Day Drive



THINGS TO SEEK

1. Elephant
2. Lion
3. Hippopotamus
4. Nile Crocodile
5. Martial Eagle





ORPEN

Orpen rest camp is situated in the central region of the Kruger National Park, about 500 km from Gauteng. Orpen can be accessed via a few different routes namely Orpen and Phalaborwa Gates. The accessed roads are all in good conditions with the main roads all being National roads. Orpen Restcamp itself is one of the small and beautiful camps in the Kruger. The nearest gate is Orpen Gate. It is 500m from the main camp.

ACCOMMODATION



Huts



Guest
Cottage



BUNGALOWS: There are 12, 2-bed units all with shower and toilets en suite, and have their kitchenettes. Utensils are supplied in all the bungalows.

FAMILY COTTAGE: There are 3 units. These rooms have up market décor and are equipped with full kitchen utensils and a fridge.



ACTIVITIES



Night Drive



Morning Drive



Day Drive



Guided Bush Walk



THINGS TO SEEK

1. Lion
2. Black-backed Jackal
3. Blue Wildebeest
4. White-backed Vulture
5. Lesser Black-winged Plover





PRETORIUSKOP

The impressive granite dome known as “Shabeni hill” is not far from the Pretoriuskop Rest Camp, which is found in the south-western corner of the world-renowned Kruger National Park. It is immediately apparent to any visitor that Pretoriuskop, Kruger oldest restcamp, is unlike any other restcamp in the Kruger National Park. Brilliant red trees adorn Kruger like surroundings, pre-dating the decision to make exclusive use of indigenous plants in laying out rest camp gardens.

ACCOMMODATION



Camping
Sites



Caravan
Sites



Huts



Bungalows



Family
Cottage



Guest
House

CAMPSITES: Tent or caravan sites with power point; communal ablutions and cooking facilities; maximum of 6 persons per site.

HUTS: 2 to 6-beds, some with fan only and others with air-con and fridge.

BUNGALOWS: 2 or 3-bed round rooms equipped with ablutions; air-conditioning; some have both hotplates and sinks; option of kitchenette or communal kitchen.

GUEST COTTAGES: 2 bedrooms, each with 1 double and 2 single beds.

FAMILY COTTAGES: 4, 6-bed (with 7 double beds)

GUEST HOUSE: Pierre Joubert 16-bed (8 bed + bench beds); Doherty Bryant 9-bed (with 3 double beds); Boma 9 sleeper accommodation (3 units, each with a double bed and a single bed).

ACTIVITIES



Night Drive



Morning Drive



Guided Bush Walk



Wilderness
3 Day Bush Walk



Sunset Drive



Bush Breakfast/
Braai



Swimming Pool



4x4 Adventure Trails



THINGS TO SEEK

1. Sable Antelope
2. Lichtenstein's Hartebeest
3. Black Rhino
4. Kudu
5. Brown-headed Parrot





PUNDA MARIA

Punda Maria, a unique small camp with a historical atmosphere can be found in the northernmost part of the Kruger National Park, in the Sandveld region, which is often portrayed as the botanical garden of Kruger. A wide variety of plants and wildlife are to be seen here and the area boasts some of the best birding in Kruger.

ACCOMMODATION



Camping Sites



Caravan Sites



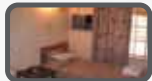
Bungalows



Family Cottage



Safari Tents



CAMPSITES: Tent or caravan sites with power point; communal ablutions and cooking facilities; maximum of 6 persons per site.

HUTS: 3-bed round rooms with communal ablutions and kitchen.

BUNGALOWS: 2 or 3-bed round rooms; equipped with ablutions (most with showers; some with baths); air-conditioning. All have sinks; some have hotplates too. You have a choice of kitchenette or communal kitchen and more over; with or without riverside view.

GUEST COTTAGE: 6-bed units; 2 bathrooms; kitchen and dining room/lounge; riverside view.

SAFARI TENTS: 2 or 4 bed permanent canvas tents; communal ablutions and cooking facilities with fridge.



ACTIVITIES



Night Drive



Morning Drive



Day Drive



4x4 Adventure Trails



Guided Bush Walk



Wilderness
3 Day Bush Walk



Swimming
Pool



Bush Art
Site



Kids Education
Programs



THINGS TO SEEK

1. Nyala
2. Sharpe's Grysbok
3. Wild Dog
4. Zebra
5. Crested Guineafowl





SATARA

Satara is a busy camp, and not without reason. It is situated in an excellent game viewing area, with the bush relatively open and the animals plentiful and diverse. The camp itself has a rustic charm, with the bulk of the accommodation set out in a series of circles. The camp is well wooded and the bird-life is prolific. At night the clink of fruit bats is fused with the chirping of cicadas and crickets. The calls of owls and nightjars add to the symphony that is punctuated intermittently by the whoop of hyena, the screech of jackal and the awe call of the lion.

ACCOMMODATION



Camping
Sites



Caravan
Sites



Bungalows



Guest
Cottage



Guest
House

CAMPSITES: Tent or caravan sites with power point; communal ablutions and cooking facilities; maximum of 6 persons per site.

BUNGALOWS: 2 or 3-bed rooms; equipped with ablutions; most with showers; air-conditioning; some have hotplates and sinks, some with sinks only. All have fridges.

GUEST COTTAGES: 6 and 5-bed

GUEST HOUSES: RUDY FRANKEL - 10-beds, STANLEY - 9-beds and WELLS - 6-beds.



ACTIVITIES



Night Drive



Morning Drive



Day Drive



4x4 Adventure Trails



Guided Bush Walk



Wilderness
3 Day Bush Walk



Wildlife Videos



THINGS TO SEEK

1. Red-billed Buffalo Weaver
2. Lion
3. Giraffe
4. Blue Wildebeest
5. Honey Badger





SHIMUWINI

Deriving its name from the Shangaan word meaning "Place of the Boabab", the camp, found in the northern region of Kruger, is aptly named because of these trees lining the Letaba River. The remote hills in the west are rich in pre-historic artefacts, while the Lebombo Mountains form a grand natural boundary to the east.

ACCOMMODATION



Cottage



Guest
Cottage



GUEST COTTAGES: Nine 2-bedroom units - both bedrooms have ceiling fans and 3 and 2 single beds respectively. One bedroom has a bathroom-en-suite. There is also a separate shower, toilet and washbasin. The kitchen has the basic utensils, and the dining room is on an open veranda.

COTTAGES: Five 1-bedroom units: 2 single beds and ceiling fan; bathrooms have a bath, toilet and washbasin and interleading doors to the bedroom/ living room. The kitchen and dining room is an open veranda and has all the basic utensils, except an oven.

GUEST COTTAGE: One 3 -beroom unit: 2 single beds and a ceiling fan, as well as an en-suite bathroom with bath and toilet. An outside, private shower is available. The kitchen consists of the basic utensils and the outside dining room is on a large, partly enclosed veranda.



ACTIVITIES



Morning
Bush Walk



Sunset Drive



Night Drive



Swimming
Pool



THINGS TO SEEK

1. Caracal
2. Leopard
3. Baobab Trees
4. Buffalo
5. Waterbuck





SHINGWEDZI

Situated in the northern part of the Kruger National Park in the heart of mopane country, this camp offers the visitors the chance to spot waterbuck, nyala, kudu and elephant. With a back to nature feel about it, this beautiful and rustic camp, which is untouched by modern technology, will definitely leave a lasting impression with its aesthetic tranquillity.

ACCOMMODATION



Camping
Sites



Huts



Bungalows



Cottage



Guest
House



CAMPSITES: Tent or caravan sites with power point; communal ablutions and cooking facilities; maximum of 6 persons per site.

HUTS: 3-bed round rooms with communal ablutions and kitchen.

BUNGALOWS: 2 or 3-bed round rooms, equipped with ablutions (most with showers; some with baths) and air-conditioning. All have sinks, some have hotplates too. You have a choice of kitchenette or communal kitchen and more over.

COTTAGE: One 4-bed unit; 2 bathrooms; kitchen and dining room/lounge; 1 double bed.

GUEST HOUSE: 7 bedded rentmeester guest house, fully equipped, river view.



ACTIVITIES



Night Drive



Morning Drive



4x4 Adventure Trails



Guided Bush Walk



Swimming Pool



Bush Breakfast/
Braai



THINGS TO SEEK

1. Giant Eagle Owl
2. Elephant
3. African Rock Python
4. Spotted Hyena
5. Green Pigeon





SIRHENI

Sirheni Bush camp nestles on the edge of the Kruger National Park's northern plains within the Mopane Veld of the region. The Sirheni Dam, on the Mphongolo River, lies next to the camp. A hide on the perimeter fence overlooks the dam and a wide variety of the game and birds are attracted to it. Visitors have been awakened to the sounds of lion and hyena, as there are often kills at the dam. Sirheni has a resident leopard that is seen on a regular basis, often coming down to drink at the dam. Sirheni is a Tsonga word meaning cemetery, since the site of the camp is near a type of elephant graveyard.

ACCOMMODATION



Cottage



Guest
Cottage



GUEST COTTAGES: Ten 4-6 sleeper units, one consists of 4 single beds and two bench beds. These have 2 bedrooms of which 9 consists of one bedroom with a double bed with en-suite bedroom.

COTTAGES: Five 4-sleeper units with 2 single beds and a separate shower with a toilet, a lounge with two bench beds, a fully equipped kitchen and an outside roofed veranda.



ACTIVITIES



Night Drive



Morning Drive



Botanical Drive



Guided Bush Walk



THINGS TO SEEK

1. Reedbuck
2. Elephant
3. Resident Leopard
4. Sable
5. Roan





SKUKUZA

Skukuza is the Kruger National Park's largest rest camp and administrative headquarters. It is situated on the southern banks of the Sabie River. The camp is well foliated and there are some lofty trees along the river's edge. Activities and facilities are diverse, as are the animals and plants found both within the camp and in the surrounding areas.

ACCOMMODATION



Camping
Sites



Caravan
Sites



Bungalows



Family
Cottage



Guest
Cottage



Safari
Tents



Guest
House

CAMPING AND CAVARAN SITES

BUNGALOWS

LUXURY RIVERSIDE BUNGALOWS

FAMILY COTTAGES AND GUEST COTTAGES

SAFARI TENTS

GUEST HOUSES

Skukuza's accommodation caters to a variety of guest requirements. For more information contact central reservations or log on to our website: www.sanparks.org



ACTIVITIES



Night Drive



Morning Drive



Guided Bush Walk



Wilderness Bush Walk



Bush Breakfast/
Braai



Swimming Pool



Kids Education Programs



Museum



9 Hole Golf Course



Wildlife Videos



THINGS TO SEEK

1. Fruit Bat
2. Thick-tailed Bush Baby
3. Warthog
4. Spotted Hyena
5. Purple-crested Lourie





TALAMATI

Talamati is a Xitsonga word meaning “Lots of Water”. Yet despite the meaning of the name, the river is actually dry. The clay soil, however, acts as a giant sponge holding a vast reservoir of underground water that keeps the vegetation lush all year round. Talamati Camp is situated in a large open valley, affording superb game viewing opportunities. The luxuriant grassveld in the area attracts large herds of grazers, ensuring that predators never lurk too far behind.

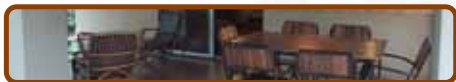
ACCOMMODATION



Cottage



Guest
Cottage



COTTAGES: Eleven 2-bed units. Both bedrooms have ceiling fans; one has 3 single beds, and the other 2. One bedroom has a bathroom en-suite (bath, toilet and washbasin), there is a separate toilet and a separate shower and washbasin. The kitchen has a gas stove (with oven), refrigerator, sink, cooking utensils, crockery and cutlery. The dining room is an open veranda.

GUEST COTTAGES: Four 1-bed units. The bedroom has two single beds and a ceiling fan. There are two bench-beds in the living room and a ceiling fan. The bathroom has a bath, toilet and washbasin and interleading doors to the bedroom and living room. The kitchen/ dining room is an open veranda and has a two-plate gas stove (without oven), sink, refrigerator, cooking utensils, crockery and cutlery.



ACTIVITIES



Night Drive



Morning
Drive



Day Drive



Guided
Bush Walk



THINGS TO SEEK

1. Leopard
2. Zebra
3. Hyena
4. Mongoose





WARNINGS

Please ensure that your stay is happy and safe by taking note of a few simple warnings. You will be sharing your stay with many exciting and unusual creatures, but without knowledge some of them could be dangerous.



Beware
Bats



Beware
Spiders



Beware
Snakes



Beware
Scorpions



Beware Malaria
ZONE

GENERAL RULES



Gravel
Roads



Tarred
Roads



Pet Free
Zone



Fire Free
Zone



Smoking
Free Zone



Stay in your
Vehicle



Noise Free
Zone



Stay on
Marked Trails



Feeding the
Game is
Prohibited



Touching the
Game is
Prohibited



Removing
Flora is
Prohibited



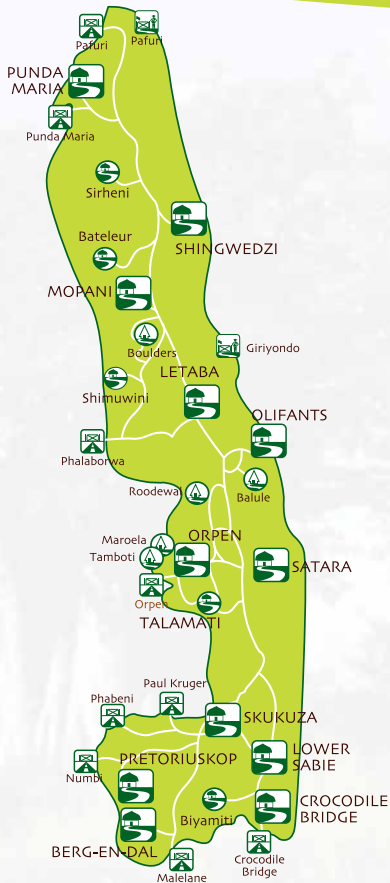
Declare
Firearms
at Gate



Litter Free
Zone



Hanging Out
of Vehicle is
Prohibited



MAIN REST CAMP



Bushveld Camps



Bush Lodges



Entrance Gates



Border Post

Kruger National Park caters to a variety of guest requirements. For more information contact central reservations or log on to our website: www.sanparks.org

Please Note:

All Emergency Road Services are from Skukuza



KRUGER NATIONAL PARK FACILITIES

☒ Main Rest Camp

☐ Bushveld Camp

Please Note:
The Mini Shop only stocks basic items; such as braai stuff, ice and Telkom phone cards. There are NO soft drinks or food available from these shops. All bookings as well as further details for activities and facilities are available from reception.

	Auto Bank	Basic First Aid	Bird Hide	Cafeteria	Communal Ablution Block	Communal Braai Area	Communal Freezer	Communal Kitchen	Conference Facilities	
Bateleur			●			●			●	
Berg-en-Dal		●		●	●	●		●	●	
Biyamiti		●								
Crocodile Bridge		●		●	●			●		
Letaba	●	●	●	●	●	●		●	●	
Lower Sabie		●		●	●			●		
Mopani			●						●	
Olifants		●		●				●	●	
Orpen		●	●		●			●		
Pretoriuskop		●		●	●			●		
Punda Maria	●	●	●	●	●			●		
Satara	●	●		●	●			●		
Shimuwini		●	●			●	●			
Shingwedzi	●	●	●	●	●	●		●	●	
Sirheni			●			●	●			
Skukuza	●	●	●	●	●			●	●	
Talamati			●			●				

[illegible]



CODE OF “GOOD GAME VIEWING” PRACTICE

1. Good Single Lane Bridges

When crossing single lane bridges or crossing points, your vehicle must come to a standstill in cases where there is a vehicle trying to cross the same point from the opposite direction.

2. Game Sighting - Congestions

In the case where there is a sighting with many cars causing congestion, the lane opposite (furthest away) the side of the game or object/ s being viewing, may not be blocked by stationary vehicles. This lane must be kept open for those that wish to pass the sighting. Please do not park diagonally, especially in the driving lanes.

3. Game Sightings - General

For game viewing, please park on this side of the road that the game is located as this will prevent cars from passing between the viewing vehicle and the object you are watching.

4. Be careful when passing animals or birds close to the road
- they could be alarmed by your approach and run into the road.

If you must walk around at night please DO NOT DO SO WITHOUT A TORCH.

REMEMBER BY FEEDING ANY WILDLIFE YOU ARE SIGNING THEIR DEATH WARRANT, AS THEY BECOME AGGRESSIVE.

Please ensure that your stay is happy and safe by taking note of a few simple warnings. You will be sharing your stay with many exciting and unusual creatures, PLEASE TREAT THEM WITH CAUTION.



SOUTH AFRICAN NATIONAL PARKS CONTACTS

PARK	TEL. NO.	FAX
Central Reservations	(012) 428 9111	(012) 343 0905
Addo Elephant	(042) 233 8600	(042) 233 8643
Agulhas	(028) 435 6078	(028) 435 6225
Augrabies Falls	(054) 452 9200	(054) 451 5003
Ai- Ais/Richtersveld Transfrontier	(027) 831 1506	(027) 831 1175
Bontebok	(028) 514 2735	(028) 514 2646
Camdeboo	(049) 892 3453	(049) 892 4252
Golden Gate Highlands	(058) 255 0012	(058) 255 0022
Karoo	(023) 415 2828	(023) 415 1671
Kgalagadi Transfrontier	(054) 561 2000	(054) 561 2005
Knysna	(044) 382 2095	(044) 382 5801
Kruger	(013) 735 4000	(013) 735 4051
Mapungubwe	(015) 534 2014	(015) 534 2014
Marakele	(014) 777 6928/9/30/31	(014) 777 1866
Mokala	(053) 204 8000/1/2	(053) 204 8003
Mountain Zebra	(048) 881 2427	(048) 881 3943
Namaqua	(027) 672 1948	(027) 672 1015
Table Mountain	(021) 701 8692	(021) 701 8773
Tankwa Karoo	(027) 341 2389	(027) 341 2814
Tsitsikamma	(042) 281 1607	(042) 281 1629
West Coast	(022) 772 2144	(022) 772 2607
Wilderness	(044) 877 1197	(044) 877 0366



South African
NATIONAL PARKS

Central Reservations:

Tel: +27 (0)12 428 9111

Fax: +27 (0)12 343 0905

E-mail: reservations@sanparks.org

Travel Trade:

Tel: +27 (0)12 426 5025

Fax: +27 (0)12 343 2006

E-mail: traveltrade@sanparks.org

www.sanparks.org

www.sanparks.mobi

